

# INNOVATIONS BULLETIN

FEBRUARY 2018



# CRAFTCX

Greenstalls Park, Costello Hill, Ilchester, Somerset, BA22 8HD

T: +44 (0) 1935 842509 | F: +44 (0) 1935 840975

E: [sales@craftexcleaningsystems.co.uk](mailto:sales@craftexcleaningsystems.co.uk) | W: [www.craftexcleaningsystems.co.uk](http://www.craftexcleaningsystems.co.uk)

# SCRUBEX 15:380 *Hybrid*

This great compact Scrubex model is now available with an innovative Hybrid power system. The Scrubex 15:380 Hybrid model combines mains and battery power providing continuous performance and maximum productivity.



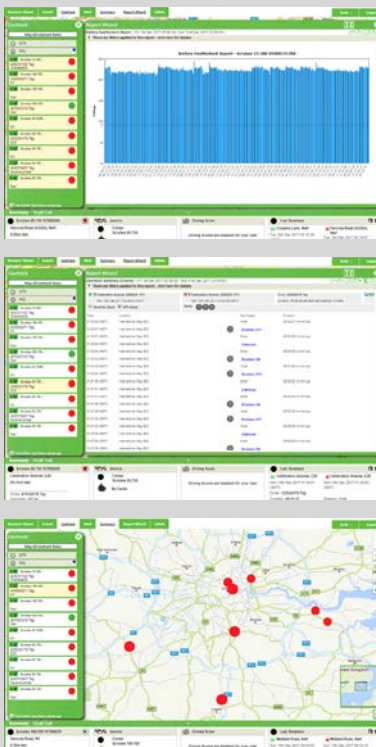
Greater  
productivity  
=  
less  
investment!



## ASSETTRAK Telemetry

Assettrak Telemetry works alongside our Assettrak system and offers a transparent overview of all your onsite assets.

Giving information such as the location, overview and realtime telemetry of each asset enables you to manage your fleet with greater accuracy and efficiency.



- Reduce ownership costs
- Increase productivity
- Efficiently plan investment
- Avoid unnecessary service call outs



# CONTOUR Orbital *LITE*

No matter what type of cleaning need you may have, this machine is your solution: suitable for a wide range of tasks, maximum productivity and increased OH&S!

The rotary orbital motion improves performance compared to traditional single disc machines. As with our standard Contour Orbital, this unit offers excellent stability and maneuverability, achieved by the high frequency oscillating mechanism.



Same great features as the Orbital; now super light-weight for daily cleaning!

## JANITEX erGO!



An intuitive, S-shape mop system created to improve efficiency when mopping floors with minimal effort!

- Cleaning chemicals replaced in seconds
- Robust tool for long-term use
- Reduces the strain placed upon users
- No preparing or lifting of heavy buckets





# SCRUBEX Anodisation

We have worked with manufacturers to bring an innovative solution to the market, anodised chassis on our scrubber drier machines.

Targeted at our clients who deliver cleaning within the leisure industry sector, this feature will maximise investment by extending the life of any metal components exposed to the corrosive nature of chlorinated environments.



# PUREX Chemical free cleaning

Purex removes dirt without the use of chemicals, and dries leaving a residue-free finish on all surfaces.

Benefits that Purex brings to the workplace:-

- Cleaner workspace - Purex absorbs dirt and bacteria
- Reduced bacteria - Proven by ATP testing
- Increased OH&S - No COSHH requirements
- Lower carbon footprint - Product is produced on site
- Environmental sustainability - Zero chemical waste



Outstanding results achieved on

- ✓ Stainless steel
- ✓ Chrome
- ✓ Glass
- ✓ Marble
- ✓ Porcelain
- ✓ Carpet
- ✓ Washroom & canteen areas
- ✓ High frequency touch areas